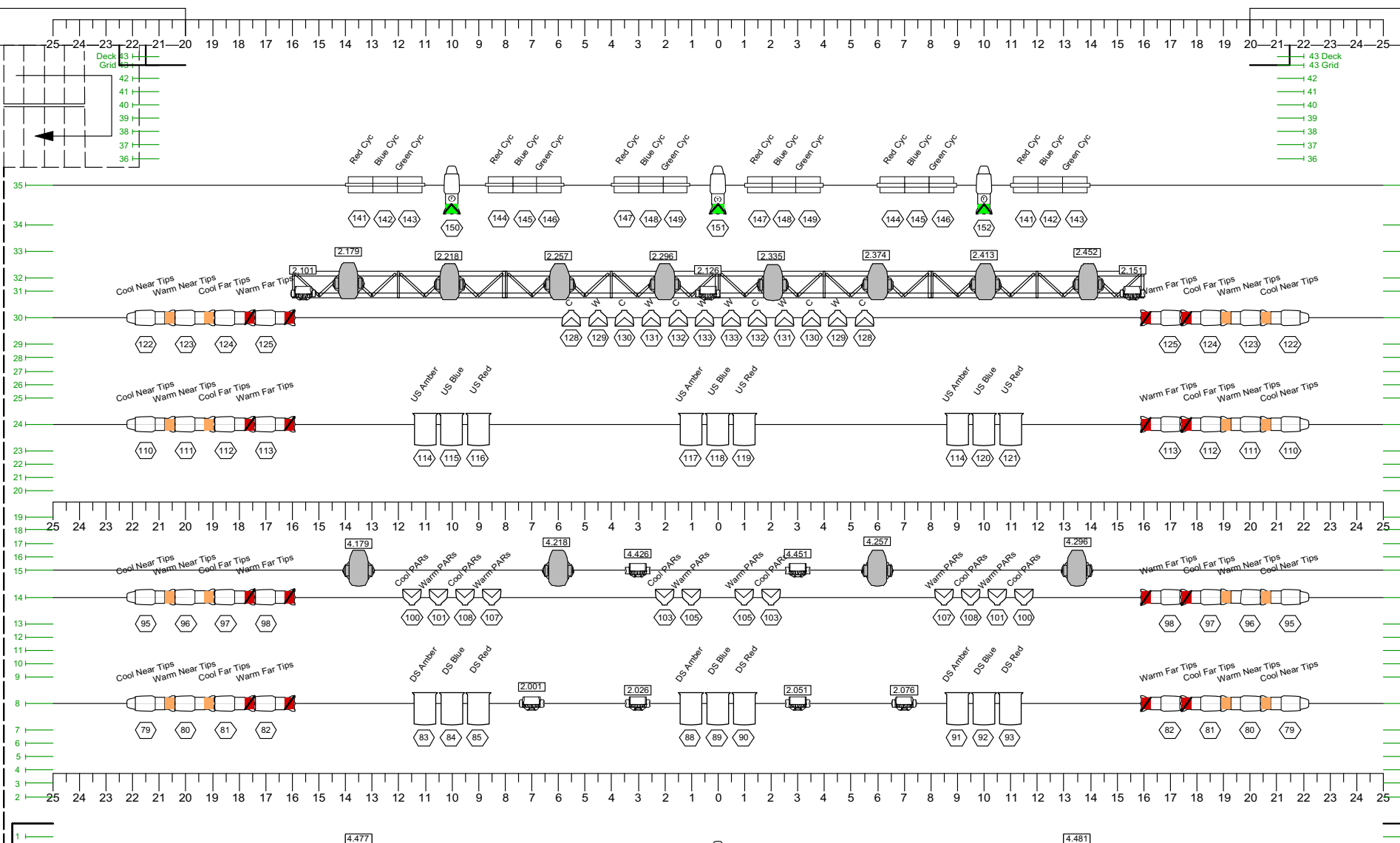


Upstage Plaster Line	30'-0"	43
Upstage Fire Curtain	29'-3"	43
Cyclorama	28'-9"	42
Rear Projection Screen (Black)	28'-3"	41
#3 Traveller Does not move	27'-9"	40
Spare	27'-3"	39
Scrim	26'-9"	38
#6 Border	26'-3"	37
#6 Leg	25'-9"	36
#5 Electric Does not move	24'-9"	35
#5 Border	23'-3"	34
#5 Leg	22'-3"	33
Moving Light Truss	21'-3"	32
Moving Light Truss	20'-9"	31
#4 Electric Does not move	19'-9"	30
Spare	18'-3"	29
#4 Legs	18'-3"	28
Spare	17'-9"	27
#4 Border	17'-3"	26
Spare	16'-9"	25
#3 Electric Does not move	15'-9"	24
#3 Legs	14'-9"	23
#3 Border	14'-3"	22
Spare	13'-9"	21
#1 Traveller Does not move	13'-3"	20
Spare	12'-3"	19
Spare	11'-9"	18
Spare	11'-3"	17
Spare	10'-9"	16
#2.5 Electric Does not move	10'-3"	15
#2 Electric Does not move	9'-3"	14
#2 Legs SR	8'-3"	13
#2 Legs SL	7'-9"	12
#2 Border	7'-3"	11
Spare	6'-9"	10
Spare	6'-3"	9
#1 Electric Does not move	5'-3"	8
#1 Leg	4'-3"	7
#1 Border	3'-9"	6
Full Black Reveal	3'-3"	5
Spare	2'-9"	4
Spare	2'-3"	3
Spare	1'-9"	2
Main Curtain		
Downstage Fire Curtain	0'-3"	1
Downstage Plaster Line	0'-0"	

Fly Floor



LX 5 16 Circuits

ML Truss

LX 4 15 Circuits

LX 3 12 Circuits

LX 2.5

LX 2 15 Circuits

LX 1 16 Circuits

Bridge (Bottom Pipe)

29 Circuits total

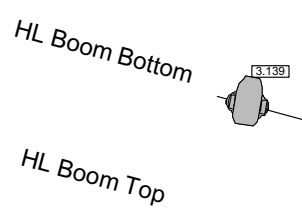
Bridge (Top Pipe)

Note: Bridge is not accessible for focus purposes at this time.

Note: Bridge top pipe is directly over the Bridge bottom pipe.

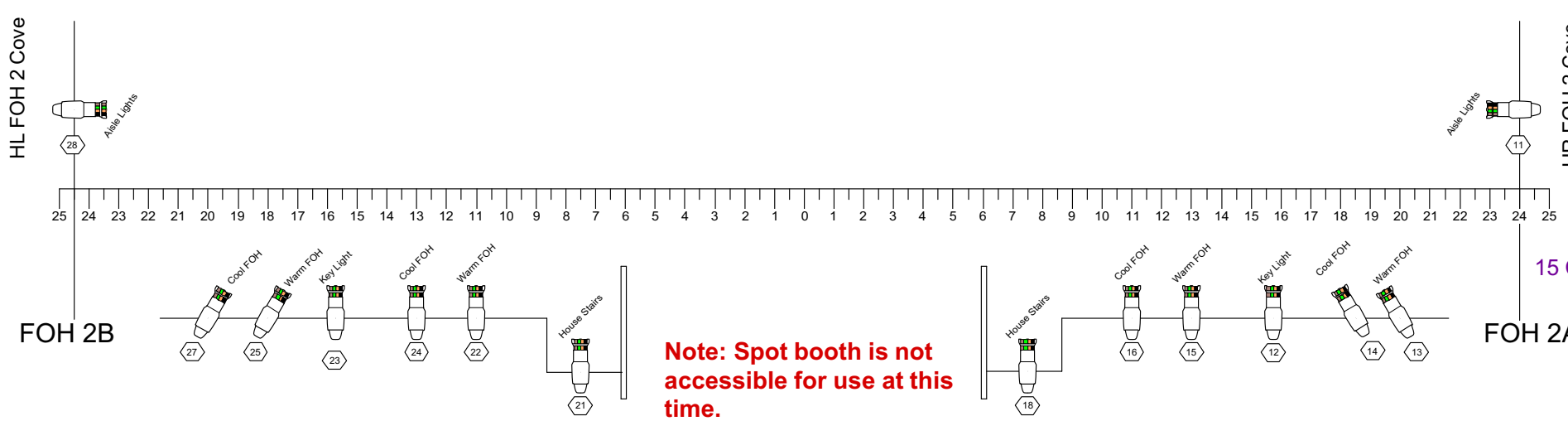
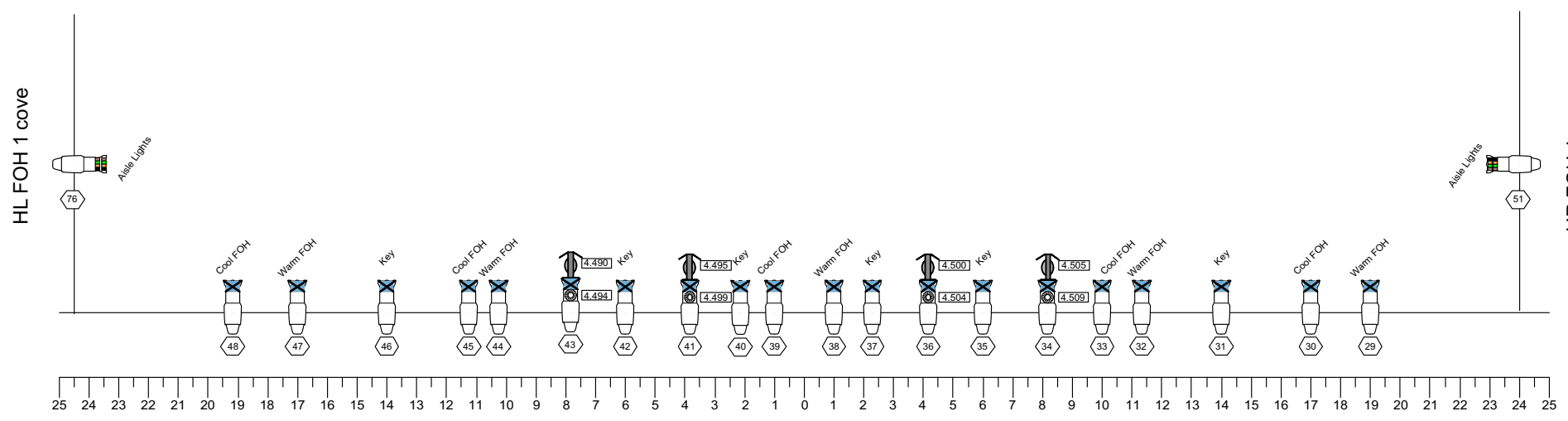
Instruments in House Plot	Used
Lycian M2	2
Source 4 19deg	20
Source 4 26deg	17
Source 4 36deg	24
Source 4 50deg	3
Source 4 Zoom 15°-30°	22
Source 4 Zoom 25°-50°	6
Rama 7" Fresnel	18
S4 PAR WFL	24
CCT Starlette 3-Cell Cycs	6
ColorForce 48	3
Atomic 3000 Strobe	2
MAC Aura (Hung)	9
Mistral TC Profile	14
Accessories	
DMX Iris	5
I-Cue	5
B - Size Tempate Holder	3

Additional Stock	Typically Available
Source 4 Fixture	42
19deg lens tube	7
26deg lens tube	15
36deg lens tube	22
50deg lens tube	17
90deg lens tube	1
Source 4 Zoom 15°-30°	4
Source 4 Zoom 25°-50°	2
Rama 7" Fresnel	12
CCT Starlette 3-Cell Cycs	2
ColorForce 48	7
Mistral TC Profile	2
Accessories	
Iris Kits	12
B - Size Template Holder	24
A - Size Template Holder	2



Note: Boom top pipe is directly over the Boom bottom pipe.

Note: Box position is not accessible for focus purposes at this time.



Note: Spot booth is not accessible for use at this time.

Note: Boom top pipe is HR Boom Top directly over the Boom bottom pipe.

10 Circuits (1-5 HR, 6-10 HL)

Note: Box position is not accessible for focus purposes at this time.

