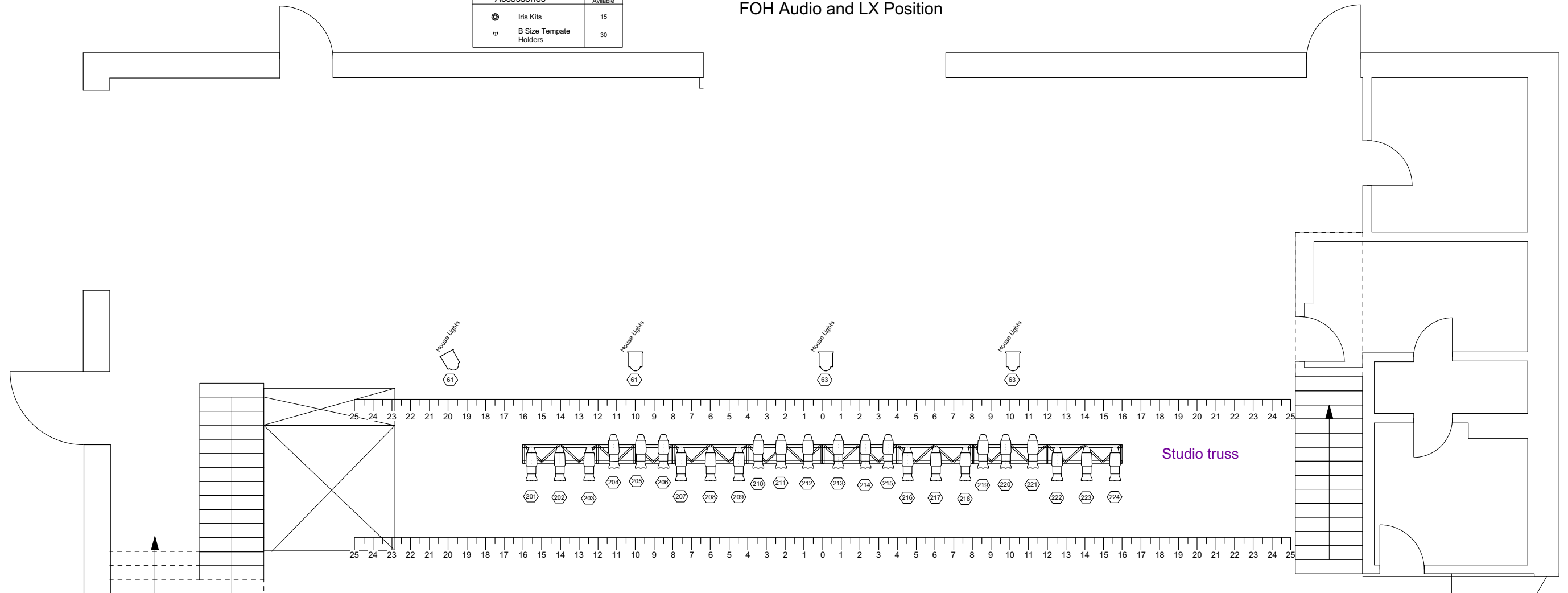


Instruments	Used
Rama 7" Fresnel	18
S4 PAR WFL	24
Source 4 26deg	16
Source 4 36deg	40
Source 4 50deg	3
MAC Aura (Hung)	9
MAC 700 Profile (Hung)	6
MAC 350 Entour (Hung)	4
CCT Far Cyc 3 Cells	6
ColorForce 48	1

Additional Available Stock	Available
Source 4 Fixture	34
19deg lens tube	8
26deg lens tube	15
36deg lens tube	6
50deg lens tube	17
Source 4 Zoom 15-30°	6
Source 4 Zoom 25-50°	2
Rama 7" Fresnel	12
6" Fresnelite	4
MAC 350 Entour	2
CCT Far Cyc 3 Cells	2
ColorForce 48	7
Atomic 3000 Strobe	2
Accessories	
Iris Kits	15
B Size Tempate Holders	30

FOH Audio and LX Position



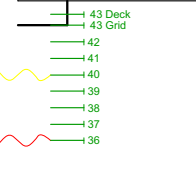
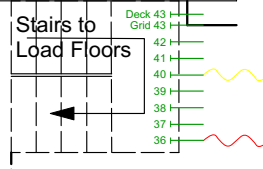
Fly Floor

Audience seating

DOWN STAGE PROSCENIUM

UP STAGE CROSS OVER

Stairs to Load Floors



Upstage Plaster Line	30'-0"	43
Upstage Fire Curtain	29'-3"	43
Cyclorama	28'-9"	42
Rear Projection Screen (Black)	28'-3"	41
#3 Traveller Does not move	27'-9"	40
Spare	27'-3"	39
Scrim	26'-9"	38
#6 Border	26'-3"	37
#6 Leg	25'-9"	36
#5 Electric Does not move	24'-9"	35
#5 Border	23'-3"	34
#5 Leg	22'-3"	33
Moving Light Truss	21'-3"	32
Moving Light Truss	20'-9"	31
#4 Electric Does not move	19'-9"	30
Spare	18'-3"	29
#4 Legs	18'-3"	28
Spare	17'-9"	27
#4 Border	17'-3"	26
Spare	16'-9"	25
#3 Electric Does not move	15'-9"	24
#3 Legs	14'-9"	23
#3 Border	14'-3"	22
Spare	13'-9"	21
#1 Traveller Does not move	13'-3"	20
Spare	12'-3"	19
Spare	11'-9"	18
Spare	11'-3"	17
Spare	10'-9"	16
#2.5 LX	10'-3"	15
#2 Electric Does not move	9'-3"	14
#2 Legs SR	8'-3"	13
#2 Legs SL	7'-9"	12
#2 Border	7'-3"	11
Spare	6'-9"	10
Spare	6'-3"	9
#1 Electric Does not move	5'-3"	8
#1 Leg	4'-3"	7
#1 Border	3'-9"	6
Full Black Reveal	3'-3"	5
Spare	2'-9"	4
Spare	2'-3"	3
Main Curtain	1'-9"	2
Downstage Fire Curtain	0'-3"	0
Downstage Plaster Line	0'-0"	0

Tour Lighting Disconnect:
400amps, 3Phase, 5 Wire
Cam-Lock Connection
Ground and Neutral Reversed

Stage Breakout Panel
40 XLR sends
12 XLR returns
1 - 40 split send multi-pin
2 - 40 XLR sends tails in house

Stage Breakout Panel
40 XLR sends
12 XLR returns
1 - 40 split send multi-pin
2 - 40 XLR sends tails in house

Tour Audio Disconnect:
100 Amps, 3 Phase, 5 wire
Cam-Lock Connection
Ground and Neutral Reversed

